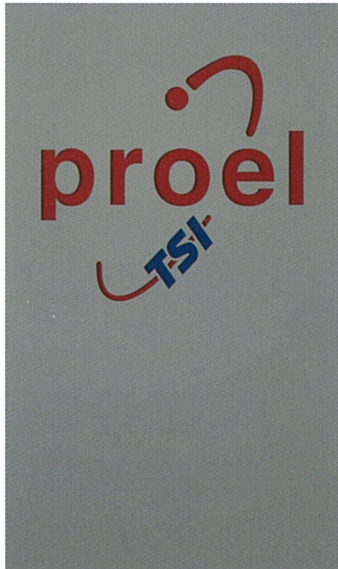


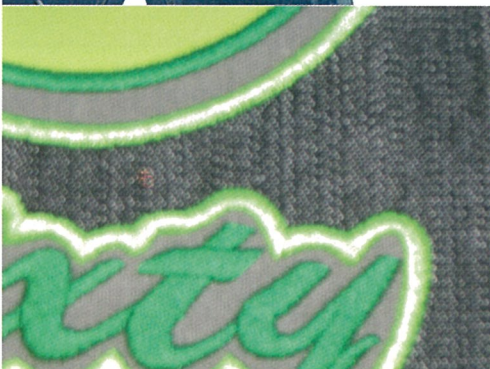
Z-Galva

The professional solution for
small and big embroidery shops.

Technology and Beyond
HappyJapan

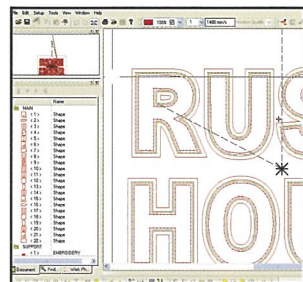


Z-Galva is able to work many types of materials such as wood, paper, textiles, anodized aluminum, non-toxic polymers, plexiglass, leather, food and etc. For this reason, it is the ideal machine for many markets including Textile Market, Trophy Market, Food and Packaging Market, Leather Market and etc.



VISION - The Camera system

The VISION option with a high resolution camera features the ability to automatically find single or multiple objects to cut in every position or rotation.

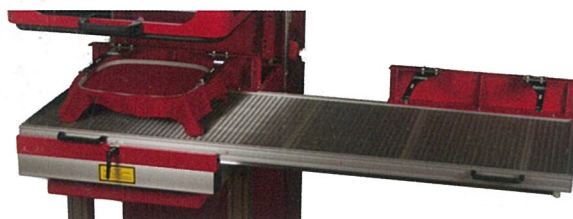


A.L.L. 2015 - Auto Laser Lettering

Auto Laser Lettering 2015 brings the user experience to a complete different level. With this innovative software feature users are able to get ready to make file in a few seconds. It is enough to decide the kind of font type and the phrase, and choose number and kind of fixing stitches. The software will create all necessary embroidery and Laser paths.

Sliding Frame system

This system allows higher productivity and saving time by preparing the next frame while processing the first one. It is really versatile as it can be used like simple "double frame" system or if needed it can slide at specifics amounts to allow you to process artworks larger than the scanning head working area.



Embroidery hoop adapter



This option allows to fasten any kind of embroidery hoop. In this way it is possible to match precision cut and engrave along with the embroidery.

Red pointer

A red laser pointer allows to reproduce before an actual cut shape in order to secure a perfect material positioning.



Technical Specifications

Scanning Technology	Galvo 2 Axis - Digital Interface - High Performances
Application	Cutting / Engraving on non-metallic materials
Laser Working Area (WxD)	300 x 300 mm - 400 x 400 mm
Table Working Area (WxD)	500 x 500 mm
Cutting Table	Anti-reflection alluminum grid with suction / Adjustable height position
Laser power	CO2 Sealed 50W / 75W - Air Cooled
Fumes Extraction	High Efficiency Turbine - External Unit 240Vac
Options	Red Pointer / Double Sliding Frame Camera System / Embroidery hoop adapter
Software	FocusCut III - Included
Languages	EN / IT / FR / GE / SP / PO
User Interface	Personal computer / Tablet (Non Included) - Control Panel
Power Supply	Single Phase 220/240 Vac 50/60Hz
Absorbed Power Max	1400VA with Laser 50W (Max 1700VA)
Dimensions (WxDxH)	594 x 1144 x 1834 mm
Weight	270 Kg (Max. 330 Kg)

HappyJapan

HappyJapan Inc.

2-9-5 Taito, Taito-ku, Tokyo
110-0016 Japan

Tel: +81-3-3834-0718

Fax: +81-3-3835-8917

e-mail: emb-info@happyjpn.com

<http://www.happyjpn.com>

Distributed by: