

MAN - 12

Single-head automatic embroidery machine

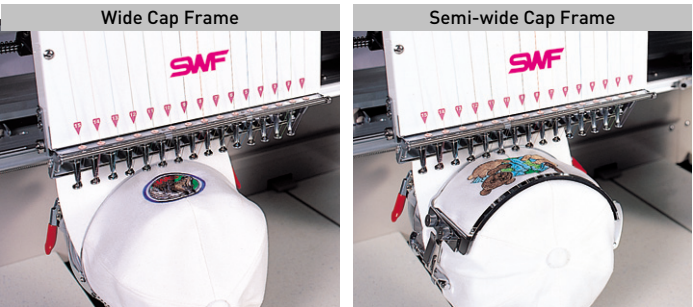
Sample Image



Main Features

- High Productivity and embroidery quality
- More powerful **New touch operation box**
  - Upgraded memory capacity / **10,000,000** stitches
  - 4 USB ports
  - Multi-tasking function
  - Supporting Multi-media data
- Compact machine size & Wide embroidery range
- **Automatic thread tension control** (optional device)

Optional Device\_Machine



Specifications			
Embroidering Range [X x Y]mm	Inner Space	Wide Cap Frame	360 x 75
		Semi Wide Cap Frame	180 x 83
		Tubular Frame	360 x 230
Machine Size[L x W x H]mm			870 x 836 x 764
Machine Size[L x W x H]mm (Table Stand)			870 x 836 x 1,534
Speed			Max. 1,000 rpm
Stitching Length			0.1 ~ 12.7 mm
Motor	Main	BLDC Motor x 1	
	X-Y	Pulse Motor x 2	
Electricity			1-Phase Free Voltage[100 ~ 240V] / [50/60Hz]
Power Consumption			500 W
Bobbin Winder			Standard
Operation Box			Color LCD Touch Screen[New Operation Box]
Hook			Standard Hook
Memory Capacity			Standard 10,000,000 stitches
Memory Media			USB Memory Stick
Safety Device			Standard : Emergency Stop, Error Code Message
Optional Device	Machine		Cap Frame[Semi/Wide]
	SDMS II		Automatic Thread Tension Control Device

We can make some modification for improvements without previous notice.

03-EN-121025



MAN-12

Single-head automatic embroidery machine

Combining embroidery industry and IT

The next generation of embroidery machine

Worldwide **Patent**

Smart Production Management System  
**NNS/SDMSII**

Revolutionary technology  
**Automatic Thread Tension Control**



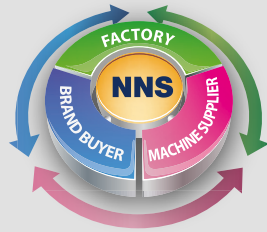
**SUNSTAR CO., LTD.**  
Head office #178-67, GAJWA-DONG, SEO-GU, INCHEON, KOREA  
tel +82[0]32-580-5980-93 fax +82[0]32-579-8350-51 [www.swfkorea.com](http://www.swfkorea.com)





# MAN - 12

Single-head automatic embroidery machine



## NNS New Network System

NNS(New Network System) is an advanced communication system using IT (Information Technology) to connect all facets of the manufacturing industry. Through NNS, the entire manufacturing process will be done in a more efficient and innovative way by implementing communication channels between the brand buyer, the factory, and the machine supplier.



## Sunstar Design & Manufacturing System for Embroidery Machine

SDMS II "a system using NNS technology" this is SunStar's smart production control system that utilizes cutting-edge technology in order to expedite the working process and be more accurate from the ordering process to production. SDMSII provides a real time production management overview and quality control to maximize production and profit.

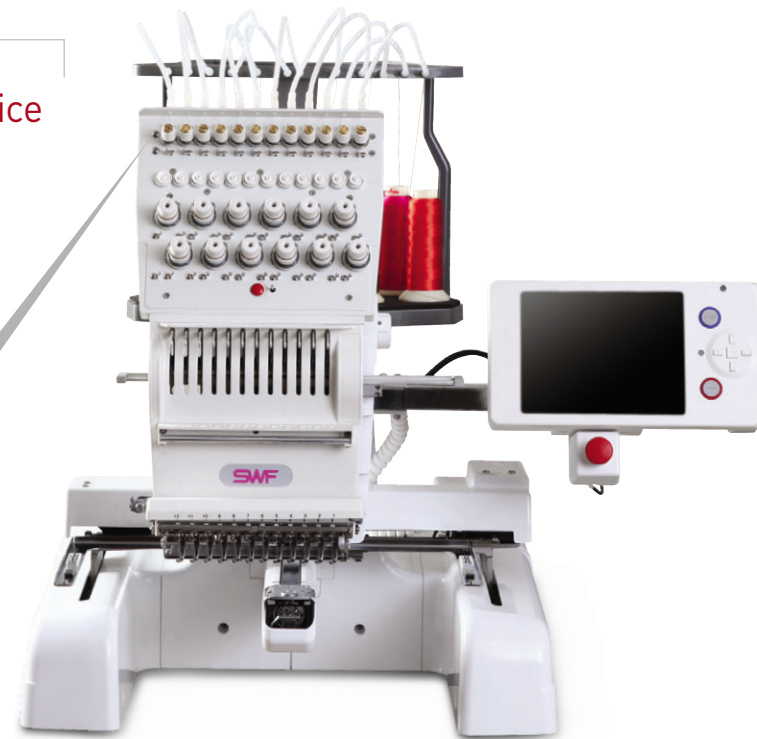
### Optional Device **SDMS II**

## Automatic Thread Tension Control Device

The optimal value of upper thread tension which is determined from sample work automatically applies when the machine is operating.

Lower personnel expenses! Shorter working time!

- 01 Motor drive system
- 02 Improved and Uniformed embroidery quality
- 03 Intermediate/low level operator is able to easily perform like an advanced technician



### SDMS II Key Points!



Prove that running a successful business is not about having the most experienced operators



Achieve real-time production management and consistent embroidery quality



Optimize the complete process of running your business through a virtual simulation



Embroidery designs are available for download from the design cloud server and sent directly to each machine

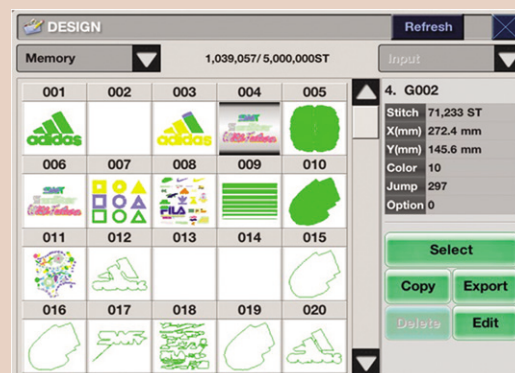
## NEW OPERATION BOX

TOUCH SCREEN

- User Centered Design
- GUI(Graphical User Interface) based on UX(User Experience)
- 4 USB Ports
- Easy & convenience design editing function
- Multi-tasking : Design modification is enabled during work



### Technology



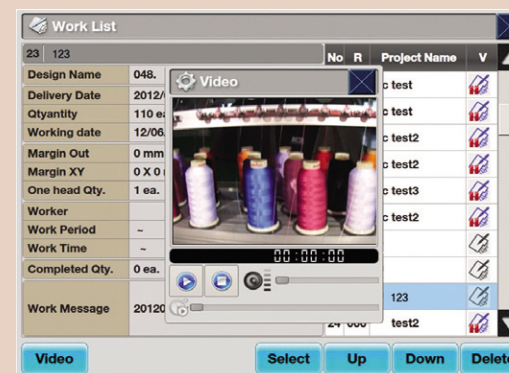
### EXTENDED MEMORY CAPACITY

- max. 500,000 stitches on loading a design
- max. 10,000,000 stitches memory capacity in operation box
- 200 storage space in operation box



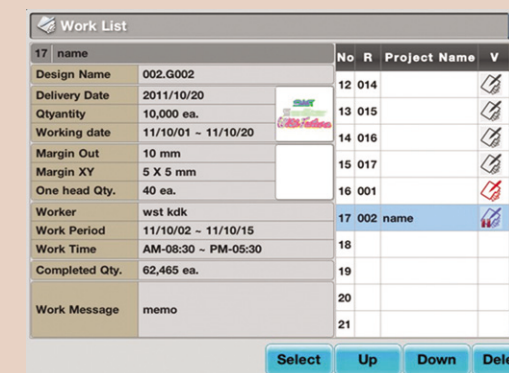
### MAINTENANCE

- Provide video for maintenance at regular intervals
- Improved maintenance, extended life of machine



### SUPPORTING A VARIETY OF MULTIMEDIA DATA

- Transfer work order accurately by means of a variety of multimedia data, including video, voice, text, etc.



### ON-LINE WORKSHEET

- The optimal embroidery parameter entered in SDMSII is sent to new operation box and automatically set up
- Workers understand accurately their task through worksheet
- Unskilled workers can easily operate the embroidery machine
- Maximize production efficiency

